

ARROW/HART



X-Switch™ Motor Control

NSF Certified motor control specifically
designed for splash zone food &
beverage processing areas

COOPER Wiring Devices



X-Switch™ Motor Control

Who says you can't have it all?

Arrow Hart® understands the unique switching needs of complex environments. The X-Switch is built tough for use in harsh industrial applications to address the needs of safety, reduced downtime and code compliance.

Table of Contents

Application	3
Features & Benefits	4
Catalog Information	5
Other Manual Motor Controls	6
A Full Line of Solutions	7



A switch solution designed to keep your business productive, safe and compliant.

- Specially designed for harsh environments with exposure to chemicals, detergents and washdowns
- Ensures personnel and equipment safety in the workplace
- Designed & built tough to withstand rough service in a physically abusive environment
- Provides compliance with relevant codes and standards
- Reduces downtime and delivers labor savings from longer-lasting designs, easier changeouts and quick, secure connections
- Part of a complete line of products for all your facility's needs



National Sanitation Foundation

For a device to earn National Sanitation Foundation (NSF) Certification, the device and facility that manufactured the device must have passed a battery of tests that pertain to the stringent requirements of the FDA and USDA.



NSF Splash Zone

NSF classifies Splash Zone areas as environments where liquids used in processing or cleaning may splash, spill or otherwise soil the surface of the device.



The Arrow Hart X-Switch complies with NSF Splash Zone Certification and meets the unique needs of food & beverage applications.

**Choose the switch
designed for longevity in
complex environments**

The Arrow Hart® X-Switch excels where standard industrial switches are most susceptible to failure: in physically abusive areas containing a host of contaminants that attack device integrity like oils, chemicals, water and moisture.



ARROW/HART™



Application

X-Switch is designed specifically for abusive industrial manufacturing applications in which the switch is exposed to frequent washdown.

X-Switch is ideal for food processing, meat-packing, distilleries, bottling and other food handling environments.

The enclosure is specially designed to prevent the penetration of external contaminants while delivering dependable motor control.

Our optional SOFTPower™ connection points mean less downtime, easier maintenance and increased safety by replacing traditional hardwiring with a plug-and-run modular pre-wired system.

A variety of input/output fittings along with a range of location options provide for maximum flexibility or in-house customization.

The optional breather/drain reduces internal condensation.

The rugged switching system is specifically designed for durability, superior service life and excellent electrical continuity.

X-Switch™ Features & Benefits

Meet the only NSF Splash Zone Certified motor control switch on the market

Designed specifically around the needs of the food & beverage industry's processing areas, Arrow Hart's® X-Switch is the ideal motor control solution for complex environments.

1 Durable stainless steel Type 4X enclosure is ideal for washdown environments

2 High-visibility red handle can be padlocked to meet OSHA lockout/tagout requirements

3 Quick-drive hex cover bolts for easy access

4 Available with pre-wired SOFTPower™ connectivity for easy connection and changeouts that reduce downtime

5 Multiple input & output configurations available

6 Optional breather/drain prevents interior condensation buildup

7 Food-rated molded silicone gasket for easy cleaning and superior protection of electrical components

8 Heavy-duty industrial 3-Pole 3-Phase 30 Amp 600V 15HP* switch designed for long life

9 Pre-wired, fixed grounding lug for safe & dependable ground continuity

10 Fork terminals allow for easy phase changes

11 Durable, mechanical switch mechanism designed for long life

View of Bottom

**When used with SOFTPower, switch rated max 10A 5HP @ 480V/AC*

Related Products

Whether you need to get power quickly and easily from one point to another, preserve cable connections for safety and reliability or simply replace a switch, we have the devices you need to get the job done.



SOFTPower
Industrial Power
Connectivity



Wire Mesh Grips
Industrial Cable
Strain Relief



Manual Contactor Switches
Industrial Motor
Switching

Motor Control Switches

Project Name:	Prepared By:
Project Number:	Date:
Catalog Number:	Type:



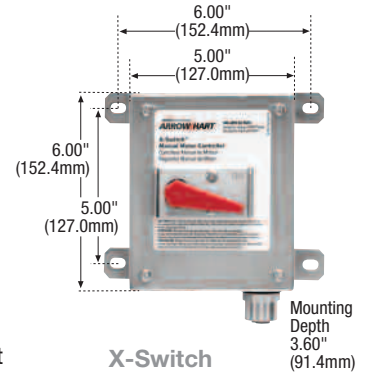
Motor Control Switch

Type 4X
30A, 600V/AC Max.
3-Pole, 3-Phase

Industrial Grade Complex Environment Switch

FEATURES

- NSF certified for use in food processing Splash Zone areas.
- Designed to reduce on-site fabrication/assembly.
- Can be padlocked to conform to OSHA Lockout/Tagout 1910.147 requirements.
- Compact size & small footprint designed for installation versatility.
- Durable, Type 4X enclosure is made of non-magnetic, non-corrosive Type 304 stainless steel ideal for washdown environments.
- Type 4X breather/drain option available to prevent interior condensation buildup (enclosure with breather drain is self-certified Type 4X).
- Smooth, continuous welded seams and satin-brushed surface for easy cleaning.
- Optional pre-wired SOFTPower™ connectivity for easy connection and change-outs that reduce downtime.
- Durable lever handle and switch mechanism will withstand repeated use in harsh environments.
- Heavy-duty manual contactor switch designed to deliver dependability, long life and excellent electrical continuity.
- Switch pre-wired with load side fork terminals for easy phase customization.
- Switch rated for maximum 15HP at 600V/AC.
- Multiple configurations and custom options to meet your specific needs.
- Short-Circuit Current Ratings up to 50kA.



Catalog Number Matrix

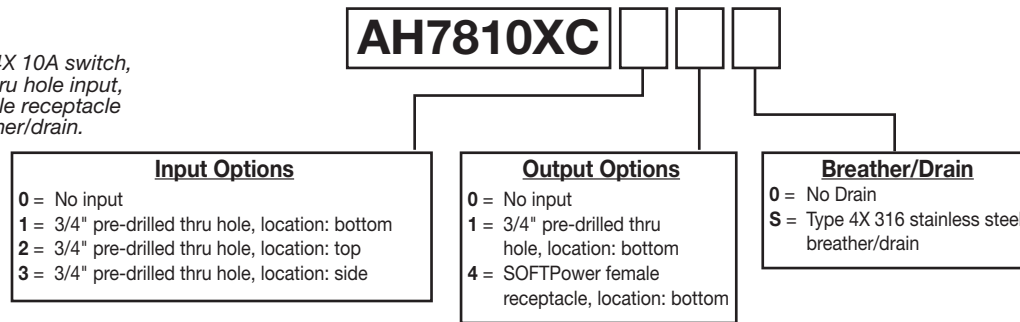
X-Switch Motor Control Switch

3-Pole, 30A 600V/AC



Sample Number:

AH7810XC14S =
Arrow Hart Type 4X 10A switch,
3/4" pre-drilled thru hole input,
SOFTPower female receptacle
output with breather/drain.



AH7810XC000, AH7810XC110, AH7810XC11S, AH7810XC14S & AH7810XC24S are available for immediate shipment. All other items are available for quick-shipment within 15 days. For quantities over 50, consult factory for lead times.

X-Switch SOFTPower Accessories



Description	Catalog No.
SOFTPower Inlet (male receptacle), 10A 600V/AC, 4-Pole Mini Connector	<input type="checkbox"/> AHMR4E4BC005MX
SOFTPower Outlet (female receptacle), 10A 600V/AC, 4-Pole Mini Connector	<input type="checkbox"/> AHMR4D4BC005MX
SOFTPower Patch Cord, 1 meter long, 10A 600V/AC 4-Pole Mini Connector (male 90° to female straight)	<input type="checkbox"/> AHML4H4TC010MX
SOFTPower Patch Cord, 2 meters long, 10A 600V/AC 4-Pole Mini Connector (male 90° to female straight)	<input type="checkbox"/> AHML4H4TC020MX
SOFTPower Patch Cord, 3 meters long, 10A 600V/AC 4-Pole Mini Connector (male 90° to female straight)	<input type="checkbox"/> AHML4H4TC030MX
SOFTPower Patch Cord, 4 meters long, 10A 600V/AC 4-Pole Mini Connector (male 90° to female straight)	<input type="checkbox"/> AHML4H4TC040MX

TESTING & CODE COMPLIANCE

- NSF Listed; evaluated for use in hose-down areas
- cULus Listed to UL508, CSA C22.2 no. 14, file no. E135083
- SOFTPower: UL Recognized, cURus, file no. E322038

MATERIAL CHARACTERISTICS

- Flammability meets UL94 requirements; 5V rated
- Temperature rating: -40°C to 105°C (-40°F to 221°F)

Other Manual Motor Controls

Choose from a variety of rugged, dependable motor controls

From NEMA 1 to NEMA 4X enclosures or just replacement switches, Cooper Wiring Devices has the devices you need for safe, dependable motor control in any area of your facility.



Non-Fused Manual Disconnect AH60MS2B



Fused Manual Disconnect AH30MS2F

Enclosed Manual Disconnects

Available in both non-fused and fused designs, these devices combine an HP-rated switch with a compact, durable, watertight enclosure that's NEMA 3R, 4X or 12 rated, OSHA Lockout/Tagout compliant and fulfills NEC Article 430 requirements. Available in 30, 60 & 100 Amp configurations.



NEMA Type 3R Enclosure with Manual Contactor Switch



NEMA Type 1 Single Gang Enclosure with Manual Contactor Switch

Manual Contactors in Enclosures

Arrow Hart's® switch and NEMA Type 1 and Type 3R enclosure combinations suit a wide variety of indoor and outdoor applications; all enclosures are OSHA Lockout/Tagout compliant. Available in 10, 20, 30, 40 & 60 Amp configurations; Type 3, 7, & 9 Hazardous Location enclosures also available with 30A switches.



Manual Motor Controller AHMC240C



Manual Motor Controller AHMC260L

Manual Motor Controllers

Ruggedly built to provide dependable manual motor control for 2-and 3-pole applications up to 60A where overload protection is not required; available in 20, 30 40 & 60 Amp configurations.



Manual Contactor Switch AH6808UDAC



Manual Contactor Switch AH6810U

Manual Contactor Switches

Ruggedly built and designed for dependability, our AC and AC/DC single-phase and three-phase switches provide trouble-free performance wherever manual motor control is required; available in 5, 10, 20, 30, 40 & 60 Amp configurations.



For more information:
www.cooperwiringdevices.com

Popular Manual Motor Controls

Rating A	V/AC	Description	Catalog No.
20	600	Two-position maintained contact switch, single throw, 2-Pole single phase, back & side wired screw termination	AH6808UDAC
30	250	Two-position maintained contact switch, single throw, 2-Pole single phase, front wired screw termination	AH6810U
30	600	Two-position maintained contact switch, single throw, 3-Pole three phase, front wired screw & clamp termination	AH7810UD
30	250	Two-position maintained contact switch, single throw, 2-Pole single phase, in NEMA 1 enclosure	AH6810G
30	600	Two-position maintained contact switch, single throw, 3-Pole three phase, in NEMA 1 enclosure	AH7810GD
60	600	Two-position maintained contact switch, single throw, 2-Pole single phase, in NEMA 3R enclosure	AHMC260L-3
60	600	Two-position maintained contact switch, single throw, 3-Pole three phase, in NEMA 3R enclosure	AHMC360L-3

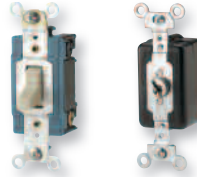
Did you know that Cooper Wiring Devices is your single-source solution?

From the front office to the production floor, you can find all the devices you need for your entire facility in one place – at Cooper Wiring Devices.



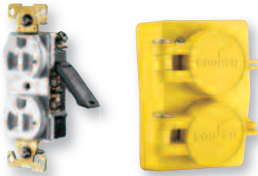
Temporary Power

Safe, protected power exactly where you need it



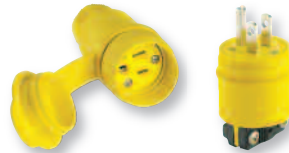
AC Switches

The right switch no matter what the application



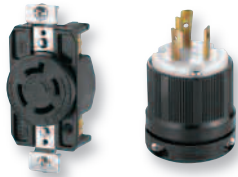
Straight Blade Receptacles

Variety, quality, durability and a comprehensive line



Straight Blade Plugs & Connectors

Designed for dependability in demanding environments



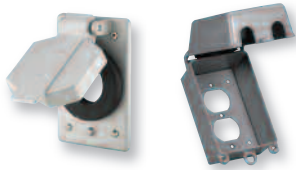
Locking Devices

A wide range of types and configurations for any need



Pin & Sleeve Devices

Electrical safety for the most hostile environments



Weather Protective Devices

Necessary protection for electrical connections



Wire Mesh Grips

Preserve proper cable connections for safety



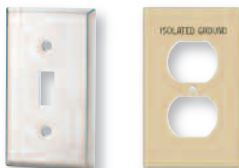
Industrial Connectivity

Reliable power, signal & data connectivity products



Motor Controls

Rugged & reliable motor control switching solutions



Wallplates

Heavy-duty construction for outstanding performance

See even more products and solutions!



Visit us at:

www.cooperwiringdevices.com

Cooper Wiring Devices

United States
203 Cooper Circle
Peachtree City, GA 30269
P: 866-853-4293
F: 800-329-3055

Canada
5925 McLaughlin Road
Mississauga, Ontario, L5R 1B8
P: 800-267-1042
F: 800-761-5748

Mexico
Carr. Tlalnepantla –
Cuautitlan Km 17.8 s/n
Col. Villa Jardin esq.
Cerrada 8 de Mayo
Cuautitlan, Mexico CP 54800
P: +525558999190
F: +525526207116
www.cooperwiringdevices.com.mx

www.cooperwiringdevices.com
email: custserv@cooperwiringdevices.com • [cwmktg@cooperindustries.com](mailto:cwdmarketing@cooperindustries.com)

Cooper Wiring Devices, Arrow Hart, X-Switch, and SOFTPower are valuable trademarks of Cooper Industries in the U.S. and other countries. You are not permitted to use the Cooper Trademarks without the prior written consent of Cooper Industries.
©2009 Cooper Industries, Ltd.

Your Authorized Cooper Wiring Devices Distributor is:

Cooper Industries, Ltd.
600 Travis, Ste. 5600
Houston, TX 77002-1001
P: 713-209-8400
www.cooperindustries.com